

# Gracemere Substation and Powerline Route Project



01

PROJECT NEWS - MAY 2012

ISSUE NO.

## The Project

Ergon Energy is investing in the electricity network in Gracemere to provide residents with a secure and reliable electricity supply, and to meet the increasing demand for electricity in Gracemere.

Rapidly developing housing estates and additional industrial development planned to the west of the township will see an increase in demand for electricity.

This demand has led Ergon Energy to identify that a new substation is required to adequately cater for the economic development and growth in the region.

Ergon Energy is proposing to acquire land to build a new substation within Gracemere as well as acquire a powerline route to connect the new substation with the existing Malchi substation (which currently supplies electricity to the Gracemere community) and Egans Hill substation (which will connect with the new substation, supporting the existing power supply also providing opportunities for future growth).

### Proposed substation site

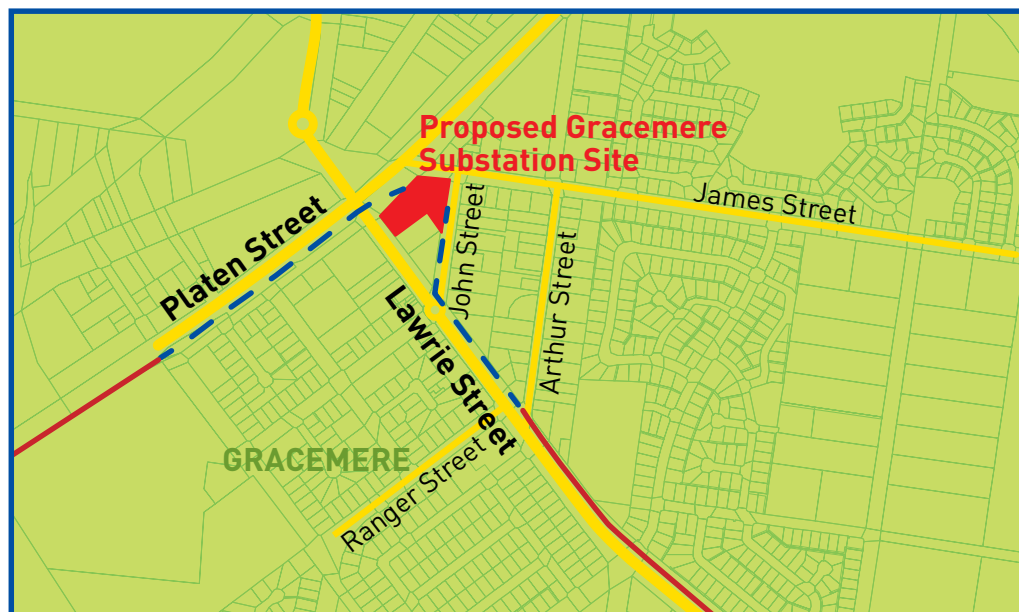
After a number of investigations and in consultation with Rockhampton Regional Council's staff and elected representatives,

Ergon Energy has identified a preferred site close to the load centre for the new substation which is bordered by Platen, John, James and Lawrie streets.

This site has been identified after the investigation of 10 other sites that were deemed unsuitable for a number of reasons including drainage, location, technical constraints and community impact.

### Proposed powerline route

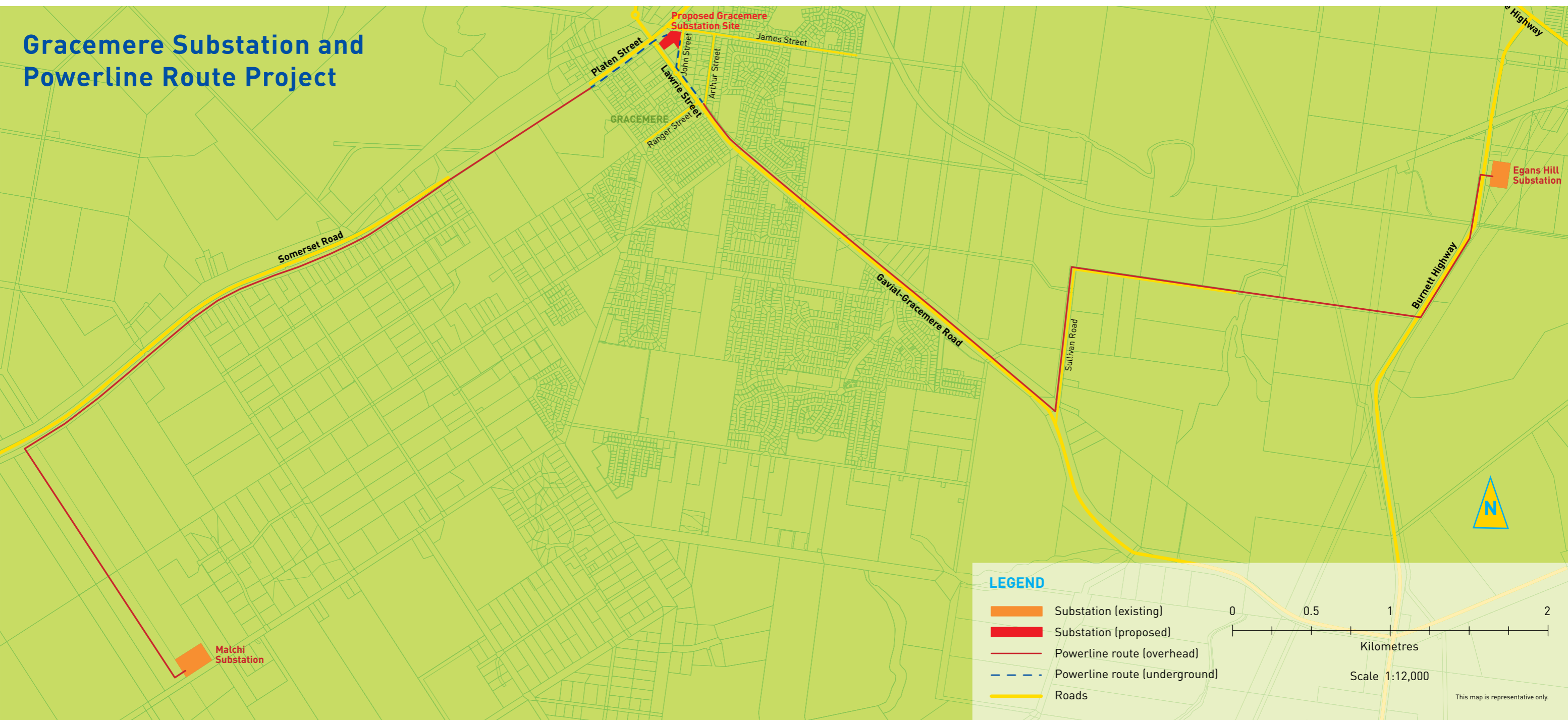
A preferred powerline route has also been identified to supply the new substation from the existing Malchi bulk supply substation as well as link to the existing Egans Hill substation to deliver reliable power supply to the community.



## Key Facts

- Ergon Energy needs to acquire a site to build a new substation to support economic development and growth in the region and provide improved reliability to Gracemere residents.
- The proposed site is located on Platen, John, James and Lawrie streets in Gracemere. The area of land is approximately 8226m<sup>2</sup>.
- Ergon Energy is committed to working with the community to develop a facility that is compatible with the surrounding environment.
- The substation will be designed and orientated on the site in a way that has the least impact to the community.
- Ergon Energy needs to construct a new powerline to connect the new Gracemere substation with the existing Malchi (the primary high voltage point of supply) and Egans Hill substations.
- A preferred powerline route has been identified.
- The powerline will be a 66,000 volt concrete pole line and will be built underground along Lawrie Street (approximately from Ranger Street to John Street and into the new substation).
- Members of the community are invited to provide feedback on the project up until the close of business on **Friday, June 8**.
- Ergon Energy will continue to provide the community with information about the project and carefully consider any feedback.

# Gracemere Substation and Powerline Route Project



## Community Impact

Minimising community impact is a key criteria in the identification of a preferred site for the substation and the powerline location, as well as the design of the facility.

### Proposed substation site

Ergon Energy is committed to building a modern substation in Gracemere, where the design takes into account the needs of the surrounding community. On the proposed site we plan to enclose the electrical infrastructure in a fenced switchyard.

We will use landscaping, fencing and additional vegetation planting to visually screen the facility from nearby residences and passing traffic.

The image to the right shows an artists impression of the front of a typical urban type substation.

The specific orientation of the substation on the site has yet to be determined, however the aim is to provide the best aesthetic effect for nearby residences.

Decisions about the final substation design will not be finalised until community consultation has occurred.



Artist impression of the front of a typical urban type substation

# Community Impact

## Proposed powerline location

In order to provide electricity supply to the new Gracemere substation, it is proposed to construct a new powerline connecting the new substation to the existing Malchi bulk supply substation and Egans Hill substation.

A preferred route of the powerline has been identified and where possible, power poles will be situated where they have the least impact on nearby properties.

The powerline is expected to be a 66,000 volt concrete pole line, with the powerlines built underground along Lawrie Street (approximately from Ranger Street to John Street).

The decision to underground the powerline along Lawrie Street and into the Gracemere substation was made due to limited space along Lawrie Street and in an effort to reduce the impact on the main street of the Gracemere township.

**We welcome feedback from the community on suggestions to manage any potential impacts from the substation and powerline route development.**



Example of a typical urban 66,000 volt concrete pole powerline

## Have Your Say

Ergon Energy is committed to engaging with the community on this project.

We value feedback from the community and encourage interested members of the public to contact the project team to discuss any concerns or provide feedback on the project.

Our feedback period for community consultation will end at the close of business on **Friday, June 8.**

A number of information sessions have been organised to ensure the community has an opportunity to gain further project information and provide feedback:

### Date, time and location:

**Thursday 10 May – 9am to 8pm  
Gracemere Shoppingworld**

### Date, time and location:

**Saturday 12 May – 9am to 12pm  
Outside Gracemere Quality Butchers  
in Lawrie Street**

We look forward to seeing you there.

## Timing

Please use the table below as a guide.

2011 – 2012	May 2012 – June 2012	2012 – 2013	2012 – 2014
<b>Network Planning</b>	<b>Community Engagement</b>	<b>Draft Design</b>	<b>Construction</b>
Identify issue	Negotiate with landowners	Evaluate feedback	Finalise designs
Identify options	Communicate with community members	Incorporate feedback	Update community
Evaluate alternatives	Provide opportunities for feedback until COB	Draft substation and powerline designs	Order materials
Propose best options	<b>Friday, June 8.</b>		Advise community of disruptions
			Undertake construction

## Who can I talk to for more information?

For more information or to provide feedback about the Gracemere substation site and powerline route, please contact the project team:

**Phone:** 1300 732 502

**Email:** [gracemere@ergon.com.au](mailto:gracemere@ergon.com.au)

**Web:** [ergon.com.au/gracemere-project](http://ergon.com.au/gracemere-project)

**Post:** PO Box 308, Rockhampton, QLD, 4700

Ergon Energy will continue to keep the community informed as the project progresses via letters, newsletters, newspaper notices, stakeholder meetings and via the Ergon Energy website.

Please note: Details included in this newsletter are subject to change as the Gracemere Substation and Powerline Route Project progresses. Please stay up to date on the latest project information at [www.ergon.com.au/gracemere-project](http://www.ergon.com.au/gracemere-project).

**For further information call 1300 732 502**