

# Whitsundays Network Upgrade Project Update



December 2022

## Laying the foundations for the Whitsundays' future

### Cannonvale substation civil works

Extensive civil works to establish the foundations for the new substation control building and the outdoor electrical equipment have commenced at the Cannonvale substation – see figures 1 and 2.



Fig 1 – Civil excavation at Cannonvale substation is underway.



Fig 2 – Contractors excavate trenches for high voltage electrical cables at Cannonvale substation.

These works include improving the drainage around the site, trenching for the installation of electrical conduits for high voltage cables, and establishing the substation security fence.

Our priority is to establish the foundations and steelwork for the new substation control building, which is scheduled to be delivered to site in mid-January 2023.

Our contractors will also be relocating a Whitsunday Regional Council sewerage main as part of these works. Our current plan has this phase of civil works scheduled to be completed by the end of February.

### Control building fabrication

The Banyo-based fabrication team are on schedule to complete the construction of the control building before Christmas, with the interior of the building currently being fitted out – see figures 3 and 4.



Fig 3 – Fabrication of the modular substation control building is progressing on schedule.

The new control building is scheduled to arrive and be craned into place on site at Cannonvale on Thursday, 12 January.

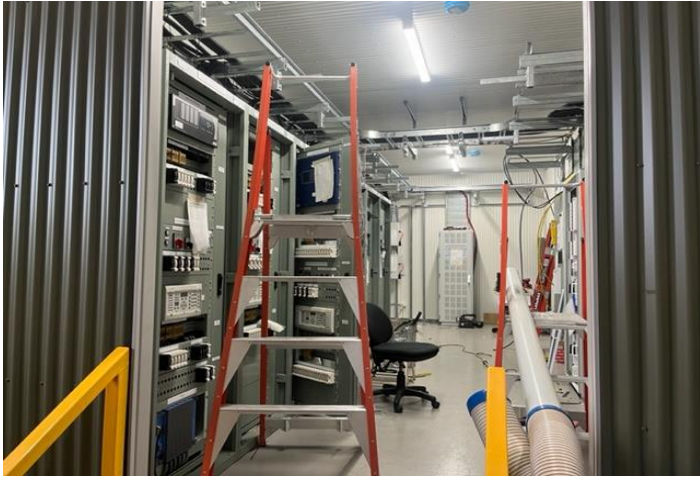


Fig 4 - Control panels are installed inside the modular control building.

The control building, which will house the substation's communications and protection equipment, will be delivered to site on the back of a semi-trailer. At 10 metres long, it will constitute a high, wide load.

Because of the size of the load, the vehicle will be escorted, and some lane closures can be expected as it makes its way from Brisbane to Cannonvale.

In preparation for the delivery, we will be levelling out a section of land at the front of the substation on Shute Harbour Road – see figure 5. The current substation entrance has a sharp, steep left-hand turn from Shute Harbour Road, so our contractors will level out the access over the next couple of weeks, to simplify entry to the site for the driver.

With the increased civil works at the substation site we will have traffic control in place to ensure the safety of traffic and pedestrians. We encourage everyone to drive safely around the area and keep an eye out for turning vehicles while these civil works are underway.



Fig 5 – Access to Cannonvale substation from Shute Harbour Road will be altered to facilitate the delivery of the building.

## Getting in touch with us

To keep up to date on the project, to provide feedback, or to **register for future updates via email or SMS**, scan the QR code or visit our project web page [Whitsundays network upgrade - Ergon Energy](#).



You can also contact our Senior Community Engagement Advisor, Kate Austin on 1300 653 055 or email us at:

[NetworkProjectEngagement@energyq.com.au](mailto:NetworkProjectEngagement@energyq.com.au)

A festive Christmas banner for Ergon Energy Network. The background is a soft, bokeh-style light blue and white. It is decorated with various golden and silver Christmas ornaments, including stars, spheres, and a small tree. In the top left corner, there is the Ergon Energy Network logo. The text 'Merry Christmas' is written in a large, elegant, blue cursive font. Below this, there are several lines of text in a smaller, sans-serif font, providing a holiday message and project status update.

Ergon's Whitsundays Network Upgrade Project team would like to sincerely thank you for your patience and support in 2022.

The project team will take a short break over the festive season, from 22<sup>nd</sup> December and will recommence on 9<sup>th</sup> January 2023.

We wish you, and yours, a safe and happy Christmas, and a prosperous New Year.

Best wishes from the Whitsundays Network Upgrade Project team.