

Whitsundays Network Upgrade Project Update



June 2023

Whitsundays project team makes major progress during May

Significant progress across several areas of the project was achieved during May. This update showcases the project team's recent accomplishments and outlines the next phase of work planned for the coming weeks and months.

Cannonvale substation

The Cannonvale substation is really taking shape now with Ergon Energy Network crews making good progress with the construction of the steelwork for the outdoor switch yard – see figure 1.



Fig 1 – steelwork in the outdoor switch yard being constructed.

Conduits for the 66,000-volt (66kV) cable were installed at the end of May in front of the substation. Around 300 metres of perimeter security fencing around the substation was also completed – see figure 2.

In early June construction moved to the front of the block on Shute Harbour Road where a couple of timber poles were installed – see figure 3.



Fig 2 – Perimeter security fencing around the substation is complete.

This will allow the site to accommodate, as a contingency, a network sized mobile generator which can be established quickly at the substation and reduce outage time in the case of a significant event.



Fig 3 – Poles being installed for network generation at Cannonvale substation.

We also recently craned three new concrete poles into place at the front of the substation and ran the connecting powerlines. These are the poles where the substation and the distribution network that powers homes and businesses across the Whitsundays meet – see figures 4a and 4b.



Fig 4a – Concrete poles being craned into position



Fig 4b – Ergon crews connecting powerlines to the new poles.

Later next month, specialist underground crews will haul the new 66kV cable from the substation, through conduits installed earlier and attach them to the new concrete poles.

Planting of a native vegetation screen will also commence at the rear of the substation this month.

Proserpine communications tower and substation works

The new telecommunications tower at Proserpine is standing tall, thanks to the skills of Ergon crews and the team at Whitsundays Crane Hire. Despite the south-easterly winds picking up in early May across

the region, the crews safely manoeuvred the concrete pole into place. Ergon’s communications team then took to the skies to attach the antenna – see figure 5.



Fig 5 – Communications tower in Proserpine is craned into position and the antenna mounted in place.

The upgrade of electrical and communications equipment at Proserpine substation continues – see figure 6 - with the replacement of circuit breakers now complete. The next, and final stage of works at Proserpine substation, is equipment testing.



Fig 6 – Ergon crews upgrading equipment at the Proserpine substation as part of the Whitsundays Network Upgrade.

Duplication of the 66kV cable

Progress on the cable duplication continues at multiple sites across the Whitsundays.

Shingley Drive

In a mammoth effort involving Ergon crews from the Whitsundays and Mackay, as well as crane operators and traffic control teams, the first of two new concrete poles along Shingley Drive was stood in May – see figures 7 and 8.



Fig 7 – concrete poles delivered to site on Shingley Drive.

Crews will conduct night works to stand a second pole along Shingley Drive. With very limited space along Shingley Drive, significant daytime traffic frequenting the Marina, and a tricky angle for the crane to safely manoeuvre the pole into place, we have determined that night works will reduce the impact on Marina patrons and make a safer working environment for the Ergon team, traffic controllers and crane operators.

Once these works are scheduled, we will share the details with the community and key stakeholders.

The new underground cable will connect to the overhead section of the network on these poles and traverse up and over Airlie Beach Hill, where it will again go underground down Mazlin Street to Broadwater Avenue.

In June, crews will return to these pole sites and install

earthing in readiness for the specialist cable joining teams who will make the final cable terminations on the poles and connect the new cables to the network. Earthing is installed around our high voltage electrical assets, prior to connecting to the network, as a safeguard for workers operating near electrical assets and the safety of the broader community.

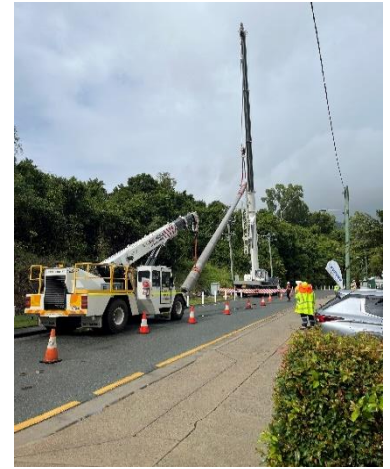


Fig 8 – Crane operator stands the first Shingley Drive pole.



Fig 9 – An example of scaffolding erected for cable termination work.

Installation of this earthing will require a small amount of excavation around the poles. Neither pedestrian nor vehicular traffic should be affected by the excavation works, however scaffolding like that shown in figure 9 will need to be established to connect the cable.

Jubilee Pocket and Flametree

In May, crews also stood a new concrete pole at Jubilee Pocket – see figure 10 and 11 - and two poles on the edge of Conway Park at Flametree, adjacent to Whitsunday Airport – see figure 12.

The new 66kV powerline between Cannonvale and Shute Harbour will involve both underground and overhead construction. These poles are now ‘dressed’ and ready for the overhead powerline to be strung, and the underground cable to be connected in the next phase of works.



Fig 10 – concrete pole at Jubilee Pocket is craned into place.



Fig 11 – concrete pole at Jubilee Pocket is craned into place and Ergon crews attach crossarms and other equipment ready for the powerline to be strung.



Fig 12 – New poles on the edge of Conway Park at Flametree near Whitsunday Airport.

Airlie Beach

Installation and proving of conduits along the Airlie Beach foreshore and down to Port Drive continues in preparation for crews to pull the 66kV cable.

The new cable is scheduled to be pulled through the conduits in September and then specialist crews will terminate the cables on the poles. The cable termination work is scheduled to commence in September and be completed by late October.

The project team is working closely with Whitsunday Regional Council to plan the final section of works at the foreshore – across Central Carpark and the footbridge. As soon as these plans are finalised, we will share information about when and how this work will be done.

Getting in touch with us

To keep up to date on the project, to provide feedback, or to **register for future updates via email or SMS**, scan the QR code or visit our project web page [Whitsundays network upgrade - Ergon Energy](https://www.ergonenergy.com.au/whitsundays-network-upgrade).



You can also contact our Senior Community Engagement Advisor, Kate Austin on 1300 653 055 or email us at:

NetworkProjectEngagement@energyq.com.au

