

# Garbutt Substation Upgrade Project - Construction Notice



NETWORK

Part of Energy Queensland

May 2024

## What we are doing

Open trenching excavating works along Dalrymple Road will commence on Monday, 20<sup>th</sup> May as part of the Garbutt Substation Project.

This civil construction work is required to install an underground cable joint bay on Dalrymple Road, like that shown in Figure 1. The joint bay is where the underground electricity cables from the Garbutt substation connects to the underground cables that supply the Belgian Gardens substation and surrounding area.

These works along Dalrymple Road are scheduled to commence on Monday, 20<sup>th</sup> May and be completed in mid-July.

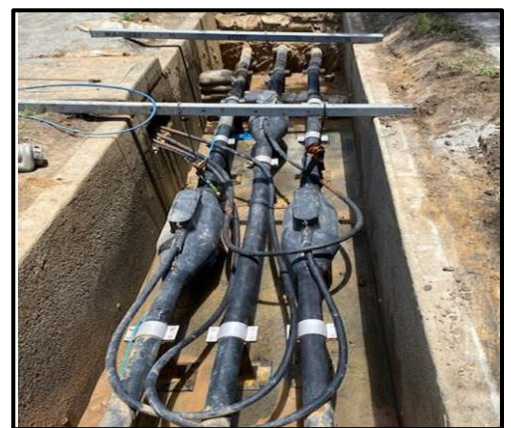


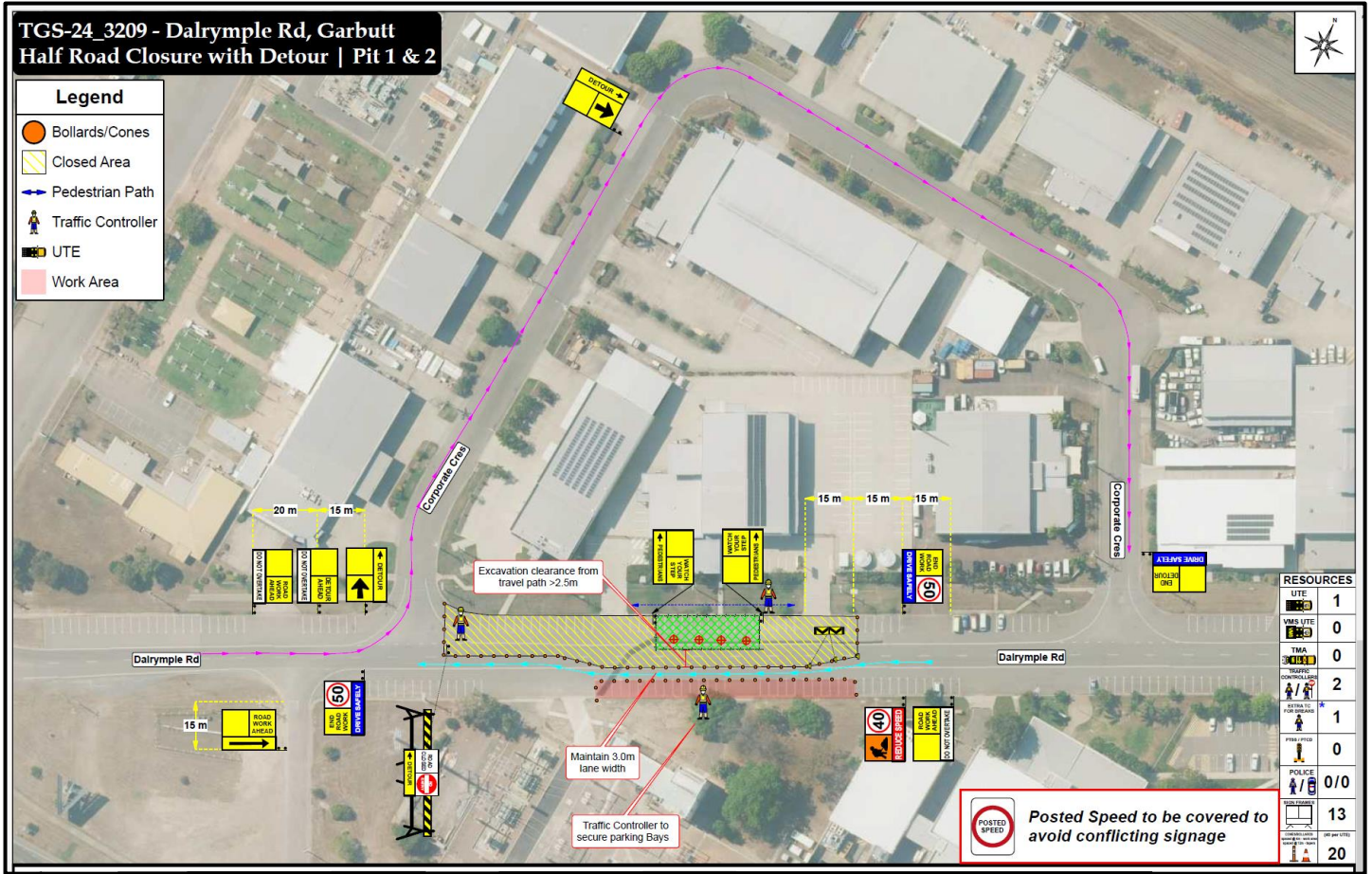
Figure 1 – Example of an underground cable joint bay

## What to expect

During these works road users, pedestrians and nearby businesses can expect the following:

### Impacts associated with this work includes:

- **Open trench excavation along a section of Dalrymple Road** using an excavator – see attached image for the location of the excavation area highlighted in green on the image.
- To manage traffic flow and safety through the area, **traffic on Dalrymple Road will be reduced to a single west-bound lane under 'stop-go' traffic control** – adjacent to the yellow shaded area in map below. **East-bound traffic will be redirected via a detour around Corporate Crescent.** Traffic signage indicating changed conditions and speed limits around the job site will be in place. Drivers can expect some delays during these works.
- For your safety and the safety of the workers on site, please adhere to traffic signs and directions, so that everyone can get home safely.
- **Several carparks** along Dalrymple Road (in the shaded green, yellow and red areas on the attached map) between the entrances to Corporate Crescent onto Dalrymple Road **will be unavailable for the duration of these works.** Please kindly refrain from parking along this area so that work can proceed on schedule. Please also be aware of the potential for increased traffic in Corporate Crescent.
- **Access to business driveways will remain open** for off street parking and deliveries. Access will be guided under traffic control for everyone's safety.
- There will be **an increase in vehicular traffic** in the area, with excavation plant and heavy vehicles, including trucks, working in and around Dalrymple Road.
- **Audible noise, dust and localised vibration** from excavation activities can also be expected during these works.
- **Reversing beepers and flashing lights** are a safety requirement and **will be always used** during works.



We thank you for your patience during these works. For everyone’s safety, please drive safely and obey traffic signage and traffic controller’s instructions so that everyone gets home safely.

Please note that all works are subject to weather and other site conditions and published timing may change.



### Getting in touch with us

To keep up to date on the project, to provide feedback, or to register for future updates via email or SMS, scan the QR code or visit our project web page [Garbutt substation upgrade - Ergon Energy](#) . You can also contact our Senior Community Engagement Advisor, Kate Austin on 1300 653 055 or email us at: [NetworkProjectEngagement@energyq.com.au](mailto:NetworkProjectEngagement@energyq.com.au)

